

# NuOss

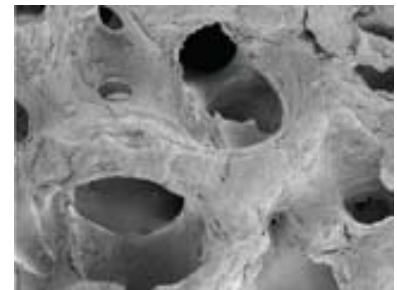
**NuOss™** is a natural, porous bone mineral matrix, produced by the removal of all organic components from bovine bone. Due to its natural structure, NuOss™ is physically and chemically comparable to the mineralized matrix of human bone.

Typical uses:

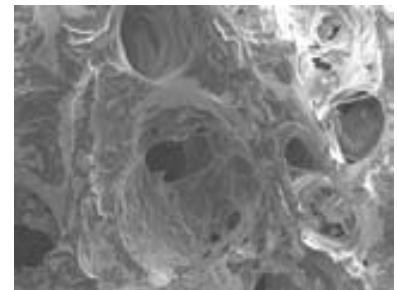
- Augmentation of the alveolar ridge
- Filling of infrabony periodontal defects
- Filling peri-implant defects in conjunction with products intended for guided bone regeneration

## BONE GRAFTING MATERIAL COMPARISON

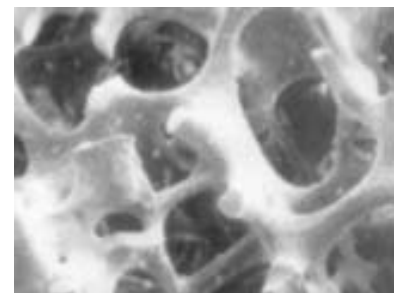
PHYSICAL CHARACTERISTICS	NuOss™	Bio-Oss®
Macropore Size (µm)	200 – 600	200 – 600
Micropore Size (µm)	0.1 – 1	0.1 – 1
Inner Surface Area (m <sup>2</sup> /g)	59	69
Volumetric Porosity (% void space)	76	83
Crystalite Size (nm)	30	30
<b>CHEMICAL CHARACTERISTICS</b>		
Calcium Phosphorous Index	1.58	1.47



NuOss™



Human Bone



Bio-Oss®

NuOss™ is available in both cancellous and cortical granules in three convenient vial sizes.

### NUOSS™ CANCELLOUS GRANULES

0.25gr / 0.5cc vial	particle size 0.25 – 1.0mm
0.5gr / 1.1cc vial	particle size 0.25 – 1.0mm
1.0gr / 2.15cc vial	particle size 0.25 – 1.0mm

### NUOSS™ CORTICAL GRANULES

0.25gr / 0.5cc vial	particle size 0.5 – 1.0mm
0.5gr / 1.1cc vial	particle size 0.5 – 1.0mm
1.0gr / 2.15cc vial	particle size 0.5 – 1.0mm

***Call Alvelogro today at 888-268-3286 and order NuOss™ for your next bone grafting procedure that requires deproteinized bovine bone.***



## ALVELOGRO

*"Your Bone Growing Company"*

888-268-3286 • [www.alvelogro.com](http://www.alvelogro.com)